



**Dynamic Solutions**  
INTERNATIONAL

# DSI Restore - Software Edition

DSI Restore is a deduplicating data protection platform, designed to Restore your peace of mind, Restore your confidence - that your business critical data is safe and available. Based on DSI's world class enterprise Virtual Tape Library (VTL), Restore software edition runs on your existing virtual infrastructure and scales from TBs to PBs of backup data. Licensed per TB, Restore is a fit for both small businesses and global enterprises. Bandwidth efficient, encrypted data replication to a second site or cloud instance meets your compliance and disaster recovery requirements.

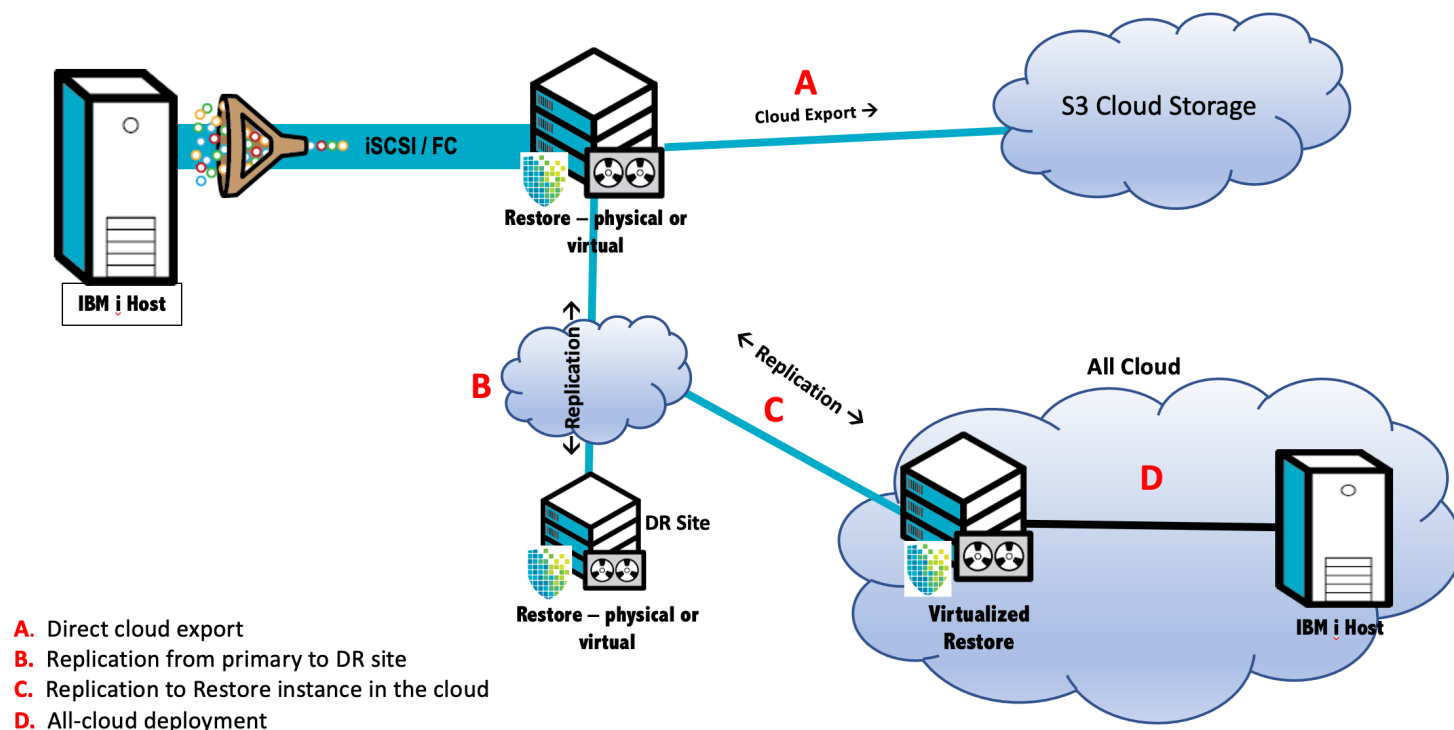
## Features

- Tape Emulation
- Secure, encrypted data replication
- iSCSI target support
- Management interface
- Integration with common IBM i backup and recovery tools
- May be shared between open systems and mainframe
- May archive to cloud storage

## Benefits

- Enables Disaster Recovery operation and testing
- Non-disruptive to existing IBM i backup processes
- Cloud integration for replication, export, and recovery
- Policy based off-site data copy and movement
- Removes physical tape management and expense
- Data encryption at rest and in flight

## Supported Architectures



**Dynamic Solutions**  
INTERNATIONAL

Dynamic Solutions International  
8744 Lucent Blvd. Suite 106  
Highlands Ranch CO 80129  
[www.dynamicsolutions.com](http://www.dynamicsolutions.com)

**IBM Power**

**Site-to-site or site-to-cloud data replication**

Securely move your backup data off site with bandwidth efficient replication technology included with DSI Restore.

**Cloud Export**

Restore may optionally archive virtual tapes to the cloud, providing off site data backup without the need for second-site infrastructure. Tapes created are full images that may be used for testing, archive, and recovery.

**DSI Restore Software Edition - Specifications**

Hypervisors	VMWare, MS Hyper-V
Cloud support	AWS, MS Azure
Operating System	OEL or RHEL 8u2
Required storage	Required storage resources are typically dedupe capacity + 65% buffer zone
Network	1GbE or 10GbE
Memory	Minimum 32GB + 3GB per TB of dedupe capacity
IBM i backup tools	BRMS, ROBOT/SAVE, LXI/MMS, SAVLIB, DSI Tracker
Max # Virtual Libraries / Drives / Carts	256 / 1024 / 64,000

**Automate your environment with DSI Conductor and VTL Agent for IBM i**

DSI VTL Conductor integrates into your existing environment and Media Management Software (MMS), delivering automated, host-based policies that leverage all of the Virtual Tape Library's (VTL) functionality without leaving the standard IBM i interface. For more information click here



<https://www.dynamicsolutions.com/products-solutions/ibm/optimization/dsi-conductor/#fndtn-nav-137>

DSI recommends a minimum of 8 hours of remote installation services with Restore systems. During this time an engineer will assist with configuring tape libraries, host to VTL connectivity, iSCSI connections, replication, and answer any questions you may have.

Visit us at [DynamicSolutions.com](https://www.dynamicsolutions.com) or call +1 303.754.2080 to speak directly with a data protection specialist.



**Dynamic Solutions**  
INTERNATIONAL