



Dynamic Solutions

INTERNATIONAL

DSI® VTL Agent (Using a Windows Desktop) Installation & User Guide *Version 2.XX.XXX*

User Guide content may change between major product versions in order to reflect product updates released via patches. In the guide and its table of contents, the heading for content changed within the past six months will be followed by “(updated *Month Year*)”.

The document code at the bottom of the page includes the guide publication date and the associated software build number, in the format *date.build*.

Dynamic Solutions International, LLC

373 Inverness Parkway
Suite 110
Englewood, CO 80112
Phone: 303-754-2000

Technical Support: 1-800-332-9200

Fax: 303-754-2066

Website: www.dynamicsolutions.com

Support Website: www.dynamicsolutions.com/support

Copyright © 2003-2017 Dynamic Solutions International Software. All Rights Reserved.

DSI is a registered trademark of Dynamic Solutions International, LLC. in the United States and other countries. Linux is a registered trademark of Linus Torvalds.

Windows is a registered trademark of Microsoft Corporation.

All other brand and product names are trademarks or registered trademarks of their respective owners.

DSI reserves the right to make changes in the information contained in this publication without prior notice. The reader should in all cases consult DSI to determine whether any such changes have been made.



Contents

| | |
|--|----|
| Introduction of VTL Agent | 3 |
| Obtaining the Agent Installation File | 4 |
| Moving the Install File to the VTL..... | 4 |
| Installation of Agent via the Command Line | 7 |
| After the Installation..... | 8 |
| Licensing Agent..... | 9 |
| LOG Files | 10 |



Introduction

This document details how to install the released package of DSI's VTL –Agent from a Windows desktop using the WinSCP application. (The WinSCP may be downloaded from: <http://winscp.net/eng/index.php> later examples use the “commander interface” which can be selected during installation of this software.)

The actual installation of VTL – Agent is accomplished via the command line of the VTL from the console, using PuTTY, or virtual console such as provided via an iDRAC or VMware Client. The commands used for installation are highlighted in **green** and the any results are highlighted in **blue** following the Windows portion of the document.



VTL Agent Installation & Configuration

Obtaining the Agent Installation File

The latest release of VTL-Agent can be obtained from the DSI support website:

<http://dynamicsolutions.com/support/products-solutions/software-docs> > VTL Agent > Software > INSTALL-VTL-AGENT-2-0x.xxx – ZIP

Note: x.xxx denotes the latest version and release number.

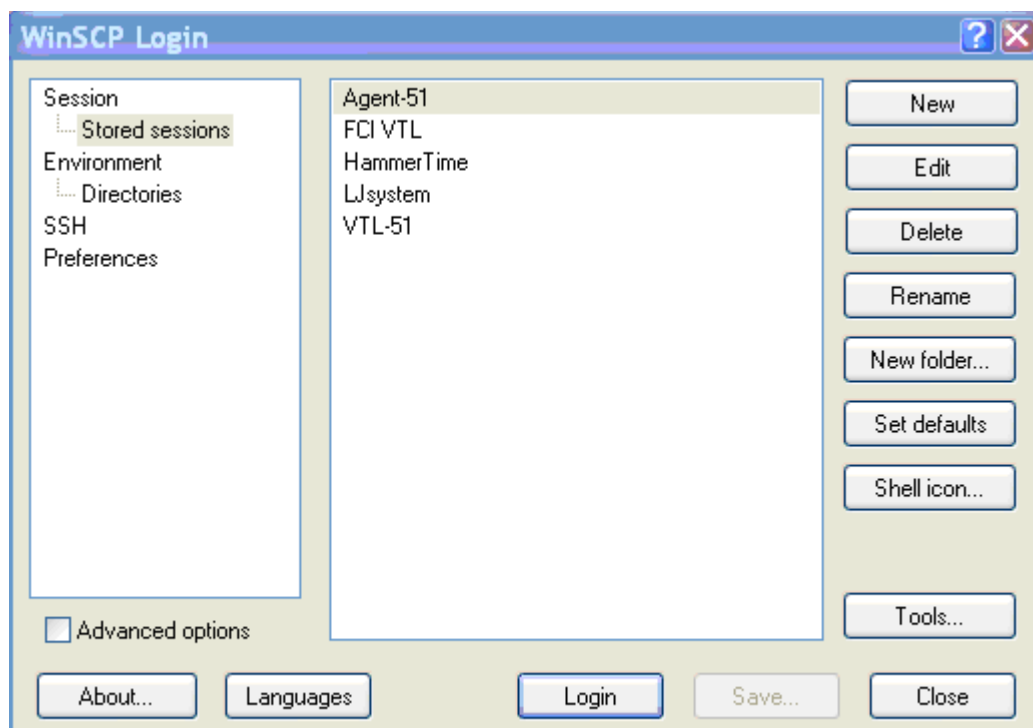
The package is also available on our FTP server, please contact support@dynamicsolutions.com if this is the preferred delivery.

1. Download and extract VTL-Agent installation file to a location of your choosing.

Moving the Install File to the VTL

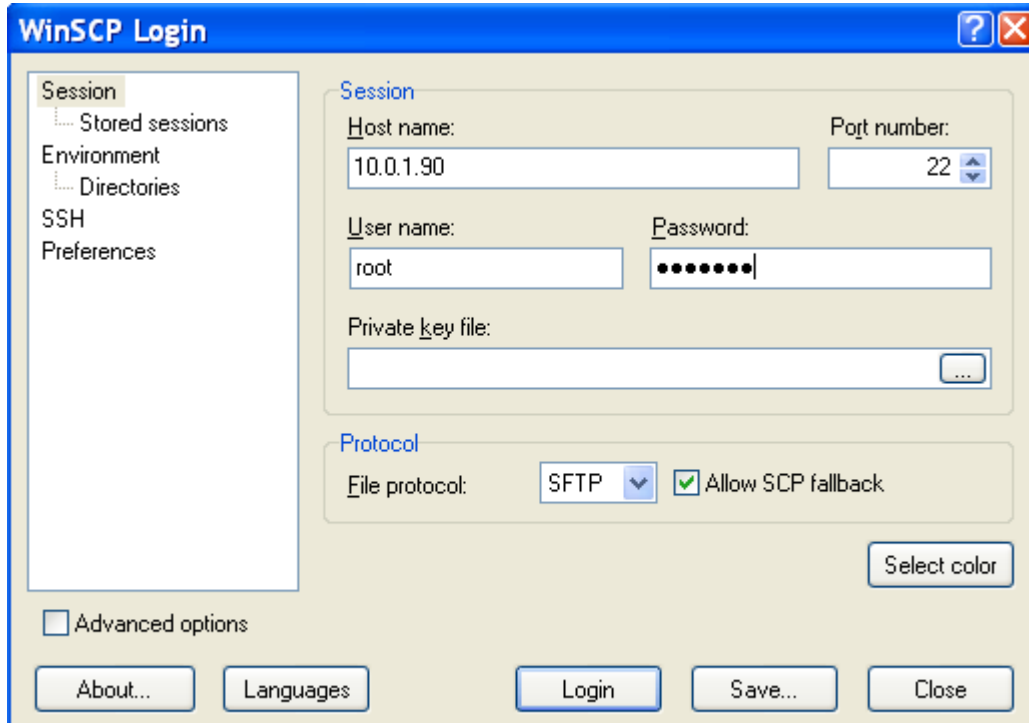
It is assumed that you have the VTL-Agent release file saved to a location on your Windows system. In this example we will transfer the file to the VTL into the “/tmp” directory.

1. Start the WinSCP application.



SCP startup screen

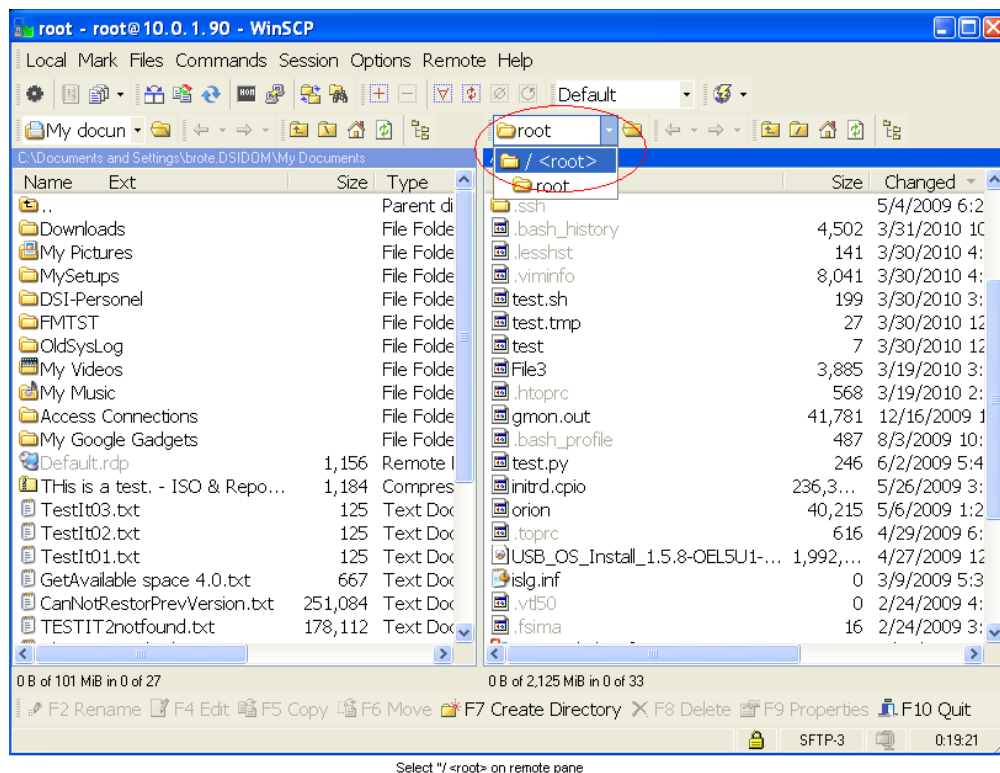
2. If you have a connection defined, double click on it. Otherwise select “New”.



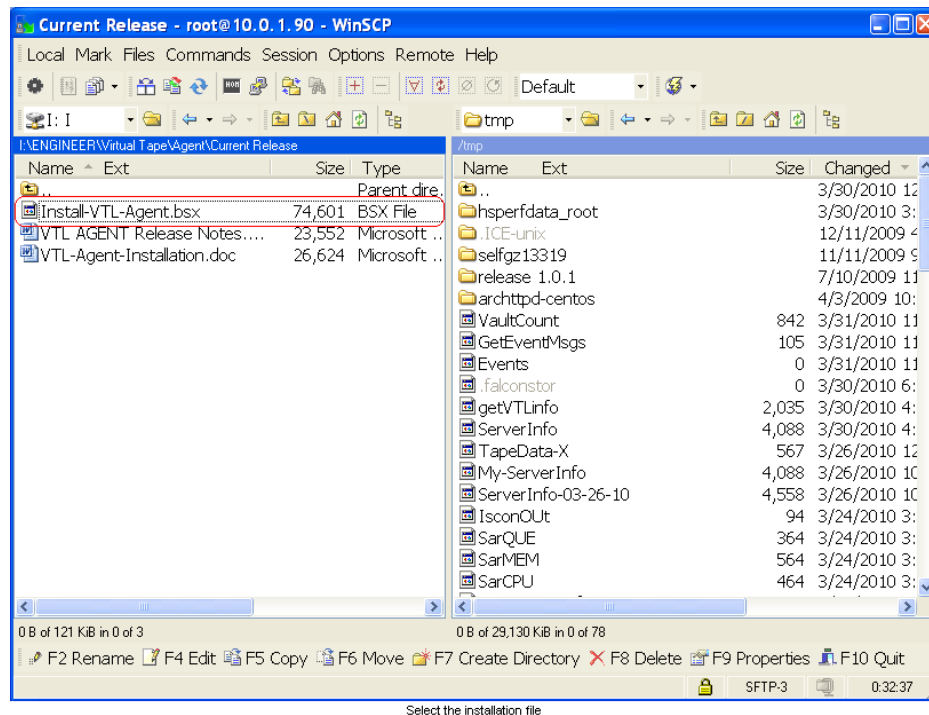
SCP Login screen

3. Enter the IP address or network name of the target machine and the user name and password. Select the Login button.

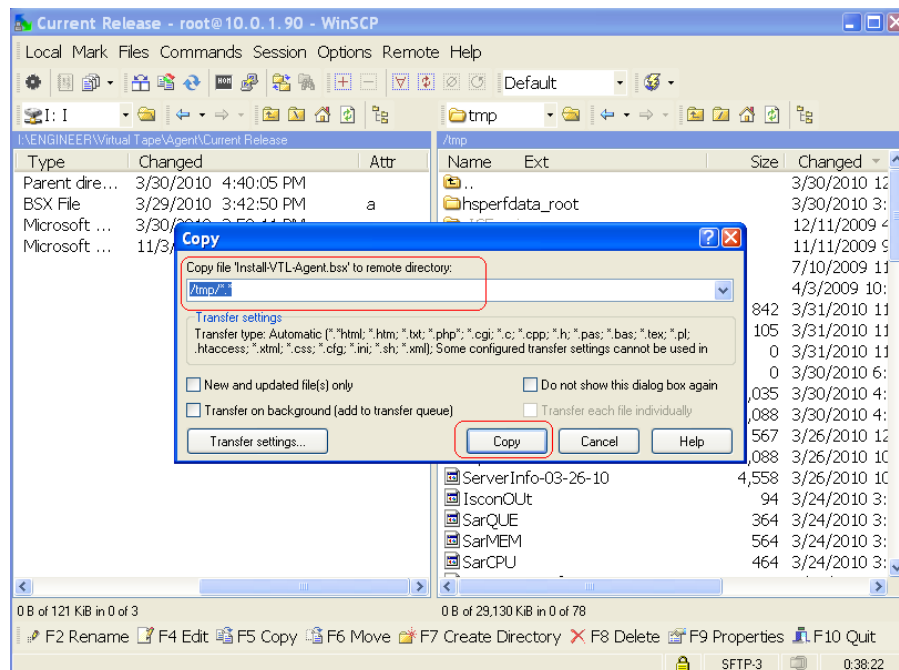
A successful login will display a screen similar to:



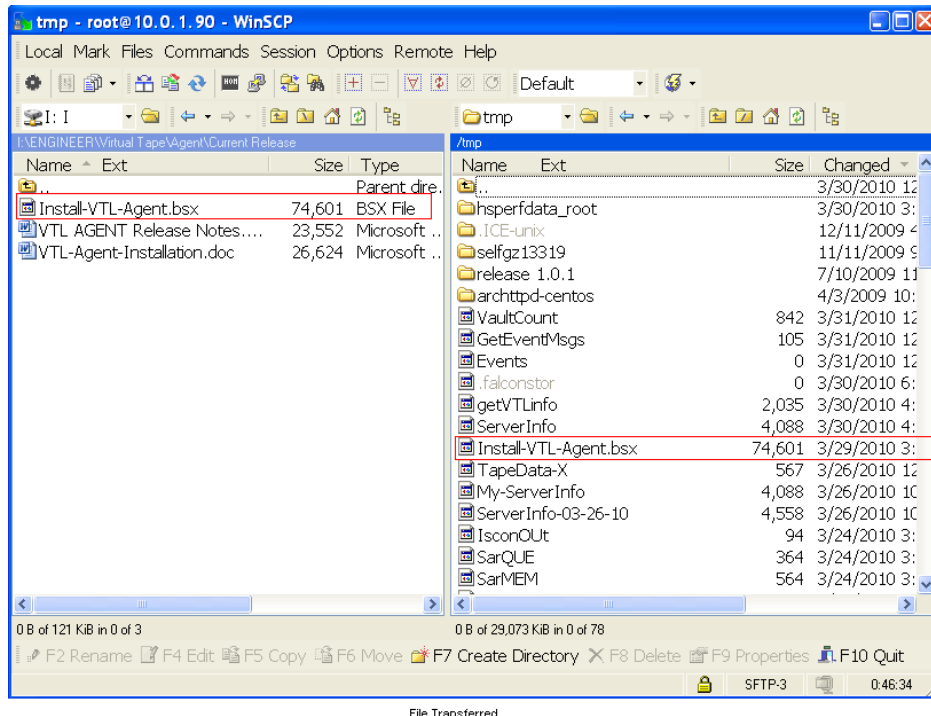
4. On the right pane navigate to the /tmp directory by first selecting the “/ <root> “ location from the drop down menu. On the resulting screen then select tmp and double click on it. This will then display the contents of the tmp directory.
5. In a similar manner on the left pane, navigate to the location of the VTL-Agent installation file.



6. You can then “drag and drop” the file to the right pane. (NOTE: when selecting the file, click on an area that has text. Clicking on an area that contains blanks causes a dotted box to be drawn.) A confirmation box will appear.



- Click on the Copy button. The file will then be transferred to the target machine in the previously selected directory.



- You may now quit the SCP application.

Installation of Agent via the Command Line

Now you will have to log into the VTL machine. It is recommended to use the “PuTTY” application, using the SSH but you may use whatever method you choose. You will have to run the installation as “root”.

- Log in as root or “su” to root once you are logged in.
- Issue a change directory command to get to the /tmp (or the location you chose to put the VTL-Agent installation file)

```
# cd /tmp
```

- Issue an ls -l command to view the install file.

```
# ls -l Install*
```

```
-rwxr--r-- 1 root root 216132 Aug 19 2016 Install-VTL-Agent-2.02.027.bsx
```

```
-rwx----- 1 root root 175131 Mar 17 2017 Install-VTL-Agent.bsx
```

Notice the “rwxr--r-- ... root root” part of the line displaying the Install-VTL-Agent.bsx file.

-
4. If the first three letters are **NOT** `rwX` issue a change mode command:

```
# chmod 744 Install-VTL-Agent.bsx
```

This will make the file executable.

5. Type in the file name preceded by a period and a slash.

```
# ./Install-VTL-Agent.bsx
```

This will run the installation script. There may be a five or six second delay during this if a previous version of the VTL-Agent is running. A running copy of the VTL-Agent will be stopped and the new one installed. You should see output similar to the following:

```
DSI self extracting script to install the VTL-Agent

./VTL-AGENT-files.tar
./VTL-Install-Agent
Running the Installation script of the VTL-Agent.
Copying files to /usr/local/agent.
./bin/VTL-Agent
./bin/VTL-Agent1
./bin/VTL-Agent2
./bin/VTL-Agent-Release-Notes.doc
./bin/val
./scripts/Agent
./scripts/Agent-LogRoll
./scripts/Agent-Monitor
./scripts/Agent-SaveErr
./scripts/ExecuteIscon
./scripts/GetAgentLogs
./scripts/GetVidFromBC
./scripts/KeepErrFile
./scripts/RemoveAgent
Now link the START/STOP script to proper /etc/rc.d directory.
To start the VTL-Agent software issue the following command.
/usr/local/agent/scripts/Agent start
```

After the Installation

6. When it finishes enter the command noted above. (You should be able to enter:

```
# Agent start
```

as the installation should link the script to a file in “/usr/sbin/Agent”. “/usr/sbin” should be in the default PATH for root.)

7. After issuing the start command you may enter:

```
# Agent status
```

In order to see if the VTL-Agent is running the output of the status command will be similar to:

```
VTL-Agent is unlicensed running version: 2.02.033 with PID: 12539,  
DEBUG level is: 10
```

Or if the VTL-Agent is not running:

```
The VTL-Agent does not appear to be running.
```

8. The Agent stop command may be used if you need to stop the VTL-Agent. It is normal for the stop command to take five or six seconds to complete as this allows for the normal shutdown and cleanup of the VTL-Agent.

```
# Agent stop
```

Licensing Agent

If a license for Agent was purchased, the following steps must be taken for Agent to recognize the license key.

1. Obtain the verification file from DSI Support. The file can be obtained by email attachment or FTP. In rare cases, email servers with virus scanners have munged the contents of this file, so obtaining through our FTP server might be preferable.

Also, an additional alternative would be to obtain the contents of the file in the body of an email from DSI Support, copying the contents to a file on the VTL. Once the file is on the VTL, verifying the contents is a matter of a few commands.

2. Run the following command in the directory where the file resides:

```
# /usr/local/agent/bin/val -f:<filename>
```

where <filename> is the name of the validation file.

The output should look similar to this:

```
10/04/2017 09:59:44 Starting VTL-Key Validation.  
10/04/2017 09:59:44 The VTL-Agent key has been written to /usr/local/agent/conf/keyfile.  
10/04/2017 09:59:44 The VTL-Agent key is valid.
```

3. Restart Agent:

```
# Agent restart
```

Agent will verify the license keyfile upon starting but return no feedback.

```
#Agent status
```

Will return something similar to:

```
VTL-Agent is licensed running version: 2.02.033 with PID: 27076,  
DEBUG level is: 10
```

LOG Files

1. To turn on a more comprehensive amount of tracing issue the command:

```
# /usr/local/agent/scripts/Agent debug
```

2. To turn this tracing off issue the command:

```
# /usr/local/agent/scripts/Agent nodebug
```

The VTL –Agent manages its log files so it is suggested that you leave debug on all the time to capture the output in case there is a problem and DSI support requests these files.

3. In order to gather the logs efficiently, run the following command:

```
# GetAgentLogs
```

The command will display the location of the resulting `log package` that can be sent to DSI support via email or FTP.

Example:

```
# GetAgentLogs
```

/bin/tar: Removing leading `/ from member names

The tar command returned 0

`/usr/local/agent/AgentLogs-100317-102907.tar.bz2` contains:

```
-rw----- root/root    6021121 2017-10-03 10:28 log
-rw----- root/root   10496321 2017-10-03 05:41 log1
-rw----- root/root   10498247 2017-09-30 03:57 log10
-rw----- root/root   10496119 2017-09-29 20:05 log11
-rw----- root/root   10498219 2017-09-29 11:54 log12
...
```